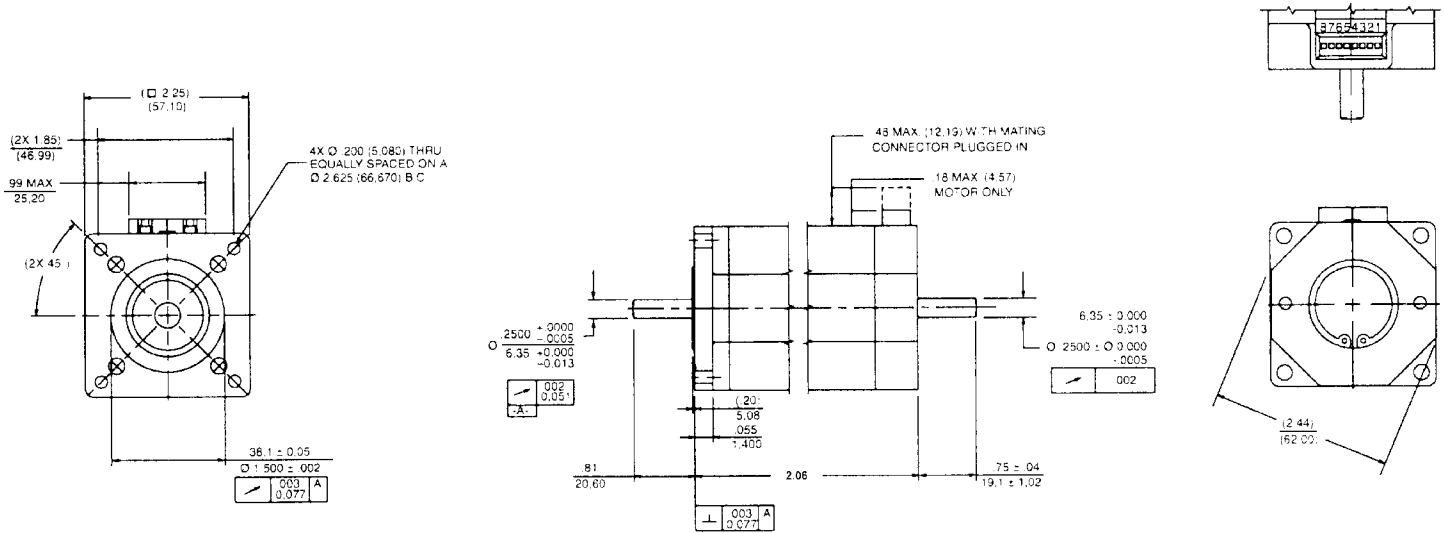


23P102S-01 - P Series Step Motor

SPEC SHEET



Specifications	
Holding Torque (2 phases on) oz-in (Nm) $\pm 10\%$	77 (0.54)
Rated Current/Phase (amps DC)	1.07
Phase Resistance (ohms) $\pm 10\%$	5.22
Phase Inductance (mH) Typical	10.3
Detent Torque oz-in (Nm)	4 (0.028)
Thermal Resistance ($^{\circ}\text{C}/\text{watt}$)	5.5
Rotor Inertia oz-in-S ² (kgm ² x 10 ⁻³)	0.0017 (0.012)
Weight lbs (kg)	1.5 (0.68)

Pin Descriptions		
Phase Connection	Pin #	Driver Connection
Bipolar Series	6	Phase 1
	1	Phase 3
	8	Phase 2
	3	Phase 4
	2 & 5	Tied Together
	4 & 7	Tied Together
Bipolar Parallel	6 & 5	Phase 1
	1 & 2	Phase 3
	8 & 7	Phase 2
	3 & 4	Phase 4
Unipolar	6	Phase 1
	1	Phase 3
	8	Phase 2
	3	Phase 4
	2 & 5	Common 1 & 3
	4 & 7	Common 2 & 4



ANAHEIM AUTOMATION

910 East Orangefair Lane, Anaheim, CA 92801
e-mail: info@anaheimautomation.com

(714) 992-6990 fax: (714) 992-0471
website: www.anaheimautomation.com